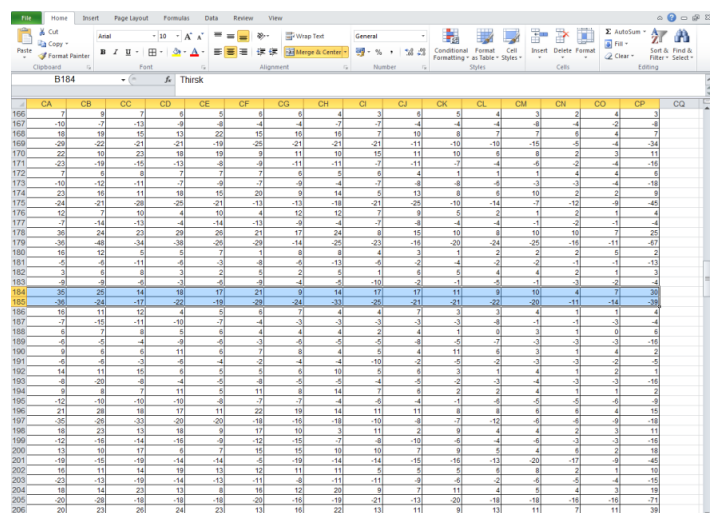


Easy population pyramids

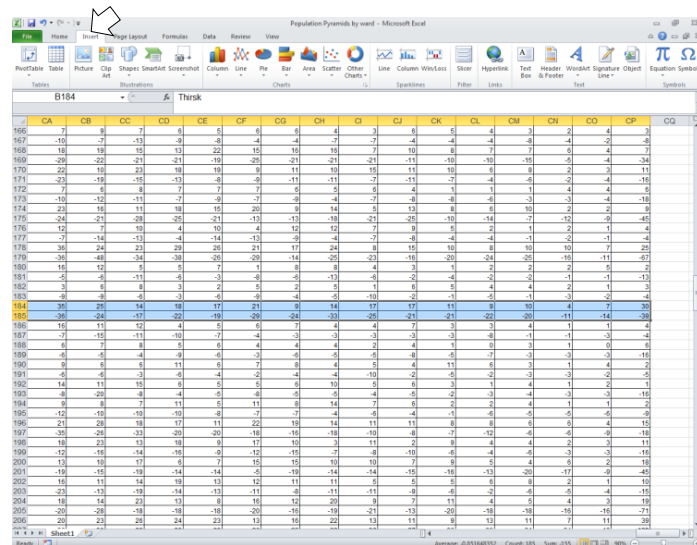
Step 1 - Click on the ward you are interested in

[illegible]

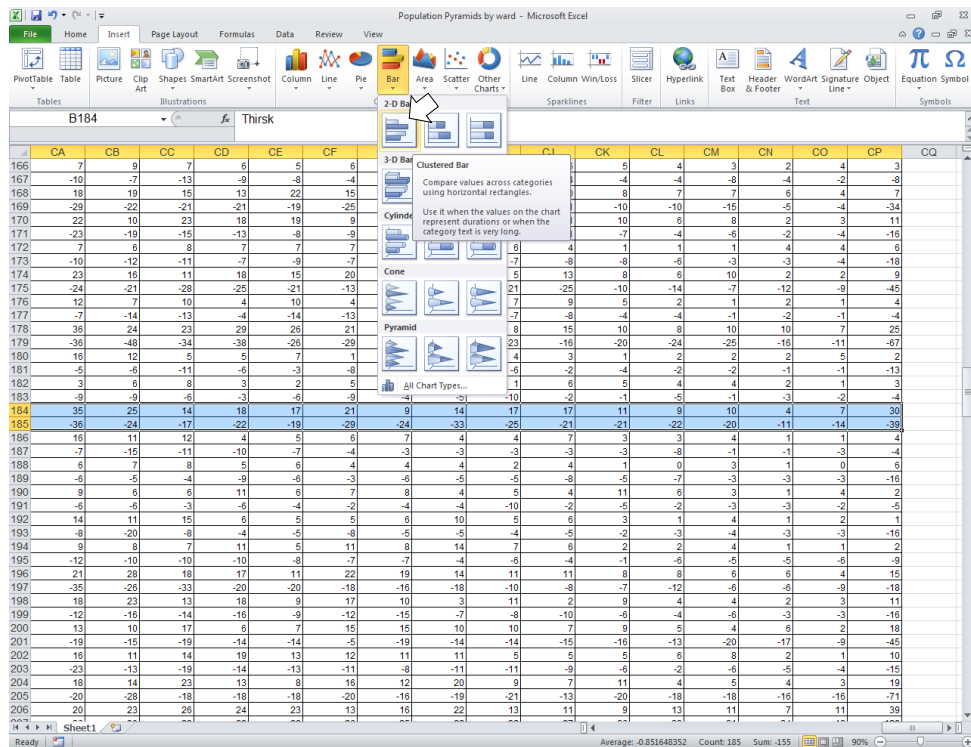
Step 2 - Drag across to the end of the columns (Column OP)



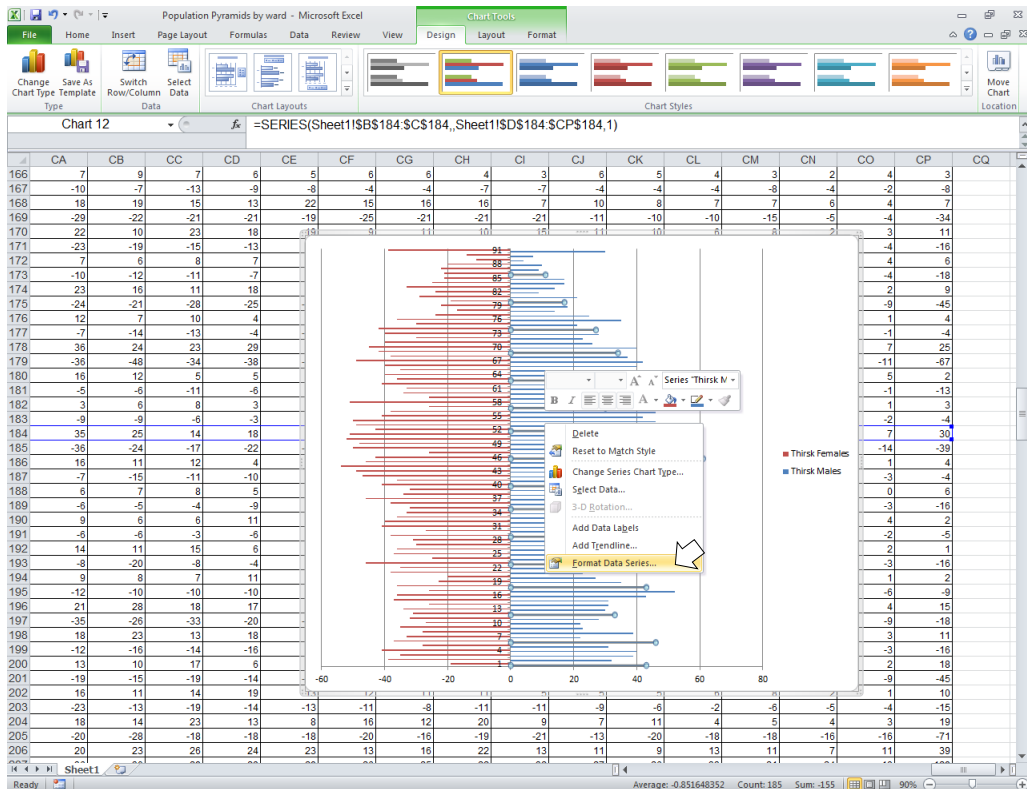
Step 3 – Click the ‘insert’ tab



Step 4 – Click on the bar chart tab and select '2-d clustered bar'



Step 5 – Right click on any of the bars and select 'format data series'



Step 6 – select 100% for ‘series overlap’ (drag right) and 0% for ‘gap width’ (drag left)

